

TBCB Antibody (N-term)
Affinity Purified Rabbit Polyclonal Antibody (Pab)
Catalog # AP19083a**Specification**

TBCB Antibody (N-term) - Product Information

Application	WB,E
Primary Accession	O99426
Other Accession	NP_001272.2
Reactivity	Human
Host	Rabbit
Clonality	Polyclonal
Isotype	Rabbit IgG
Calculated MW	27326
Antigen Region	42-70

TBCB Antibody (N-term) - Additional Information**Gene ID** 1155**Other Names**

Tubulin-folding cofactor B, Cytoskeleton-associated protein 1, Cytoskeleton-associated protein CKAP1, Tubulin-specific chaperone B, TBCB, CG22, CKAP1

Target/Specificity

This TBCB antibody is generated from rabbits immunized with a KLH conjugated synthetic peptide between 42-70 amino acids from the N-terminal region of human TBCB.

Dilution

WB~~1:1000

E~~Use at an assay dependent concentration.

Format

Purified polyclonal antibody supplied in PBS with 0.09% (W/V) sodium azide. This antibody is purified through a protein A column, followed by peptide affinity purification.

Storage

Maintain refrigerated at 2-8°C for up to 2 weeks. For long term storage store at -20°C in small aliquots to prevent freeze-thaw cycles.

Precautions

TBCB Antibody (N-term) is for research use only and not for use in diagnostic or therapeutic procedures.

TBCB Antibody (N-term) - Protein Information**Name** TBCB

Synonyms CG22, CKAP1

Function Binds to alpha-tubulin folding intermediates after their interaction with cytosolic chaperonin in the pathway leading from newly synthesized tubulin to properly folded heterodimer (PubMed:[9265649](#)). Involved in regulation of tubulin heterodimer dissociation. May function as a negative regulator of axonal growth (By similarity).

Cellular Location

Cytoplasm. Cytoplasm, cytoskeleton. Note=Colocalizes with microtubules. In differentiated neurons, located in the cytoplasm. In differentiating neurons, accumulates at the growth cone.

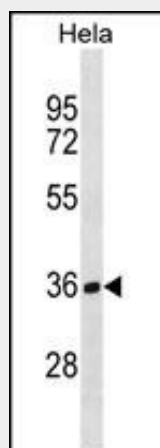
Tissue Location

Found in most tissues.

TBCB Antibody (N-term) - Protocols

Provided below are standard protocols that you may find useful for product applications.

- [Western Blot](#)
- [Blocking Peptides](#)
- [Dot Blot](#)
- [Immunohistochemistry](#)
- [Immunofluorescence](#)
- [Immunoprecipitation](#)
- [Flow Cytometry](#)
- [Cell Culture](#)

TBCB Antibody (N-term) - Images

TBCB Antibody (N-term) (Cat. #AP19083a) western blot analysis in HeLa cell line lysates (35ug/lane). This demonstrates the TBCB antibody detected the TBCB protein (arrow).

TBCB Antibody (N-term) - Background

TBCB binds to alpha-tubulin folding intermediates after their interaction with cytosolic chaperonin in the pathway leading from newly synthesized tubulin to properly folded heterodimer. Involved in regulation of tubulin heterodimer dissociation. May function as a negative regulator of axonal growth.

TBCB Antibody (N-term) - References

Bailey, S.D., et al. Diabetes Care (2010) In press :
Talmud, P.J., et al. Am. J. Hum. Genet. 85(5):628-642(2009)
Cleveland, D.W., et al. Hum. Mol. Genet. 18(8):1384-1394(2009)
Martins-de-Souza, D., et al. Eur Arch Psychiatry Clin Neurosci 259(3):151-163(2009)
Fanarraga, M.L., et al. Exp. Cell Res. 315(3):535-541(2009)